



Welcome to

B

N

BLOOMINGTON-NORMAL & SURROUNDING CITIES
RESIDENT'S GUIDE

Rob Dob's

Restaurant & Bar

(309) 590-3434

801 N. Hershey Road, Bloomington

Check out our menu at robdobsbn.com or
on our Facebook at [@robdobsrestaurant](https://www.facebook.com/@robdobsrestaurant).



Evergreen
1730 Evergreen Blvd.
Normal
(309) 808-0006

Oakland
4117 E Oakland Ave.
Bloomington
(309) 662-0303

Williamsburg
210 N. Williamsburg Dr.
Bloomington
(309) 808-0051



IRON COYOTE
CHALLENGE PARK

(309) 205-7500

4113 Oakland Ave., Bloomington

ironcoyotepark.com



WELCOME TO BLOOMINGTON-NORMAL FROM OUR MAYORS

BLOOMINGTON

As Mayor of this vibrant community, I am excited for you to learn about my city. Located in the heart of Central Illinois, Bloomington serves as an economic center to communities across the region. Its geographical location and excellent transportation network are a few of the reasons why Bloomington is home to several nationally recognized companies including State Farm Insurance, Country Financial, Beer Nuts, Illinois Wesleyan University and Ferrero North America.

Bloomington is known for its excellent quality of life. From award winning golf courses to an extensive park system and many cultural offerings, Bloomington can be described as having a “small town feel with large city opportunities” for all ages.

Another considerable advantage to living in Bloomington is that many of the activities you will partake in, whether for work, play or other necessities, are within 15 minutes, leaving you with plenty of time for other activities unlike big cities. This is one of the reasons why Bloomington was named the “Happiest city in America” in 2020 by Zippia.

What you may find most irresistible however, is the people of Bloomington. We are very much like that small town where everyone knows each other. People in Bloomington are very welcoming and it is no surprise that our community is growing increasingly more diverse, as more people seek to make Bloomington their home.

Bloomington is a city on the move. Our local economy is growing, as well as our population. It's fun to be in Bloomington! Tell your friends and family about us and have them join the fun!

I look forward to meeting you when you are out and about. Please don't hesitate to stop me and say hello!

Mboka Mwilambwe
Bloomington Mayor



NORMAL

Welcome! It's my honor to introduce you to Normal, a great place for residents and employers to work, live and play. The Town of Normal is a progressive community with a history of innovation, a fact appreciated by local employers. Our community is in the heart of Illinois with many available transportation options, making it easy to get here, whether traveling by car, plane or train.

The Town believes partnerships with institutions and businesses are key to building community. The local medical community is top-notch, and family-friendly neighborhoods and exceptional schools have much to offer. Normal is the home of Illinois State University, and their leadership agrees the Town is a large part of the attraction for prospective students and families. The community's emphasis on education and training carries through to all levels, including a well regarded K-12 school system and two community colleges.

Uptown Normal, the Town's central business district, is a premier destination for shopping, dining and entertainment. Normal residents enjoy many amenities, including the Constitution Trail, the Normal Public Library and an award-winning Children's Discovery Museum. The historic Normal Theater provides a classic cinema-going experience.

Whatever your interests, I'm confident the Town of Normal has something for you.

Chris Koos
Normal Mayor



We hope this Resident's Guide makes you eager to visit the dynamic and vibrant communities of Bloomington and Normal. Discover our [local brews](#), [farm-to-table restaurants](#) and [many cultural events of a big city](#), but with an ease of livability not found in major metro areas. The McLean County Chamber of Commerce invites you to check out the many businesses and individuals who make this community unique.



**SCAN
HERE,
SHOP
LOCAL**

THE B-N ADVANTAGE

Contents

- 6 Downtown / Uptown
- 12 Diversity
- 15 Business
- 18 Child Care & Learning Centers
- 20 Recreation
- 22 Where we eat
- 28 Breweries
- 30 Arts
- 40 Healthcare
- 43 Fitness
- 44 Worship
- 46 Education
- 53 Residential
- 54 How we give
- 57 Get Connected

THE B-N ADVANTAGE

WRITTEN BY SAHAN KURUPPUARATCHI
AND PANTAGRAPH MEDIA

PHOTOS BY JUSTIN HURT
AND PANTAGRAPH MEDIA

© 2021 Pantagraph Media. This book is published by Pantagraph Media and distributed by the McLean County Chamber of Commerce. Pantagraph Media has made every attempt to verify the information contained in this guide and assumes no liability for incorrect or outdated information. No portion of this publication may be reproduced without written permission of the publisher. All rights reserved. The BN Resident's Guide is published by Pantagraph Media, 205 N. Main St., Bloomington, IL 61701

30



28



17



The Best Place in Town for Meetings & Specials Events!

- 3rd largest banquet space in town perfect for conferences, wedding, meetings, trade shows, and special events – from 10 to 800 people.
- Stay in our newly renovated, elegant, comfortable rooms and suites with complimentary hot breakfast and Wi-Fi
- Ask about our local business partnership options and special not-for-profit pricing
- Ask about our bring your own caterer (BYOC) or Full service catering options.



Sleep Here



Eat Here



Meet Here



It All Happens Here

Parke Regency
HOTEL & CONFERENCE CENTER

1413 Leslie Drive, Bloomington

309-662-4300

www.parkeregency.com

DOWNTOWN *Bloomington*

VIBE: *ARTSY* AND *Historic*

Downtown Bloomington is home to more than twenty art galleries featuring wildly diverse artwork including sculpture, photography, jewelry and contemporary painting. The downtown also teems with locally owned boutiques featuring trendy clothing and accessories. When the sun sets, Bloomington comes alive with live music venues, unique restaurants and spirited bars.



HOT SPOTS AROUND

Bloomington-Normal



◀ The Castle Theatre

Often credited with putting great live music back on the map in Bloomington/Normal, The Castle features an eclectic mix of bands that are hot in their genres.

Uptown Circle ▶

The Uptown Circle is a unique, environmentally friendly gathering space with a park and water feature used for performances, families and those travelling by train.





UPTOWN *Normal*

VIBE: hip **AND** COLLEGIATE

Uptown Normal is not your typical campus town. Filled with indie shops, great places to eat and drink, Uptown is home to the Children's Discovery Museum and a transportation hub.



◀ Normal Theater

Patrons can enjoy a classic cinema experience featuring a diverse line-up of classic titles, modern independent, foreign, and documentary films. The theater also hosts live, community events.

Mystic Kitchen and Tasting Room ▶

This self-described funky bohemian lounge has an extensive, yet approachable wine list, unique cocktails and bistro cuisine.



LOCAL FINDS

Bloomington Farmers' Market

Downtown Bloomington Farmers' Market is a producer-only market offering a wide array of products including vegetables, fruits, cheeses, meat, free-range poultry and eggs, flowers, and herbs. The Market also features live music and artisans of prepared goods and fine arts.



BLOOMINGTON-NORMAL RANKED AMONG BEST PLACES IN THE NATION

.....

**AMONG "30 SMALL
COLLEGE TOWNS
WITH GREAT
QUALITY OF LIFE"**

BEST CHOICE SCHOOLS, 2020

**#1 BEST AMERICAN
CITIES TO LIVE IN AFTER
THE PANDEMIC**

BUSINESS INSIDER, 2020

**NUMBER
ONE
HAPPIEST
CITIES**

ZIPPIA, 2020

**#8 MOST LIVABLE
SMALL CITIES IN THE U.S.**

SMARTASSET, 2018

**AMONG THE TOP 10
MOST AFFORDABLE
METRO AREAS
ATTRACTING YOUNG
PROFESSIONALS**

THE PEW CHARITABLE TRUSTS, 2017



**THE HOME OF
NO JUDGMENTS!**

You have to start somewhere, and we understand that! So we create an environment that you can feel comfortable in. With equipment that meets every need, we have something for all levels from Beginner to Advanced.



Try Us Out For Free For 7 Days!



Crunch Normal • 301 S Veterans Parkway
Normal, IL 61761 • 309.807.3388

Use of masks and club amenities vary by location. Please check with your local club today. Additional fees and restrictions may apply. See club for details. ©2021 Crunch IP Holdings, LLC Add clubnews@crunch.com to your address book. You are receiving this message because you are on the promotional announcement list for Crunch. We respect your privacy. We do not share, rent, sell, or otherwise use any personal information you have given us to any third party without your permission, except when required by law, subpoena, other legal process or in order to protect the safety of the public.

BLOOMINGTON-NORMAL *by the* NUMBERS

MCLEAN COUNTY PRODUCES
THIRTEEN PERCENT OF ALL
WIND ENERGY IN IL.



101 CHARGING STATIONS
FOR ELECTRIC
VEHICLES IN B-N.

NO. **4**

OF THE
BEST PLACES
TO LIVE IN
AMERICA
**AND HAVE A
LITTLE LEFT
IN YOUR
PAYCHECK**

**IF YOU'RE
READING THIS
YOU PROBABLY
LIKE TRIVIA.**

And a fun way to get
acclimated to a new town is to
attend trivia nights, and you
can find one almost any night
of the week at various bars and
breweries around town.

Check out TwinCityTrivia.com
for more info.



ONE OF TWO
COLLEGIATE CIRCUSES
LEFT IN AMERICA

GAMMA PHI CIRCUS **SINCE 1929 AT ISU**

**TWENTY
THREE
PERCENT** OF MONEY SPENT BY
VISITORS GOES FOR
**FOOD AND
BEVERAGES**



TWIN CITY

AUTOMALL

2426 S Main St Bloomington IL, 61701

309-590-6666

Twincityautomall.com

TWIN CITY

GARAGE



309-451-3443

Twincitygaragenormal.com

604 Orlando Ave., Normal



Surrounding Communities

ANCHOR
ARROWSMITH
BELLFLOWER
CARLOCK
CHENOA
COLFAX
COOKSVILLE
CROPSEY
DANVERS
DOWNS
ELLSWORTH
EL PASO ▶
GRIDLEY
HEYWORTH ▶
HUDSON
LE ROY
LEXINGTON ▶
MCLEAN
MERNA
SAYBROOK
SHIRLEY
STANFORD
TOWANDA ▶



El Paso is home to the El Paso Golf Club, a challenging test of golf from any set of tees. The USGA Mid-Am Qualifying has been held here along with IHSA regionals and other tournaments.

Community safety, superior schools and social enrichment are what makes Heyworth so special. Heyworth is also home to Hey Days—a 4-day event in the summer featuring carnival rides, live music and lots of great food.

Only 15 minutes from Bloomington/Normal, the city of Lexington offers a small town feel with big city amenities. From restaurants such as 'Lexington Social' to an academically and athletically competitive school, this city has something to offer for everyone looking for a laid back, safe and convenient location.

"Close to everything, and far enough to leave it all behind." Towanda is known for their grain elevators, wind farms and Route 66. Towanda is also home to multiple parks, well-stocked lake, excellent schools and not a single traffic signal!

WE ARE HEALTHCARE

We live here. We work here.
WE ARE CHRISTIE CLINIC.

Trusted and local for more than 90 years, we care about delivering personalized, accessible healthcare for you and your family.

BLOOMINGTON ON EMPIRE

2502 E. Empire St.

- ENT/Audiology
(309) 663-4ENT (4368)
- Family Medicine
(309) 300-1031
- Neurology
(309) 385-7010
- Vein & Vascular
(217) 366-2670

LEXINGTON

307 W. Main St.

(309) 365-8608

- Family Medicine
- Laboratory
- Radiology



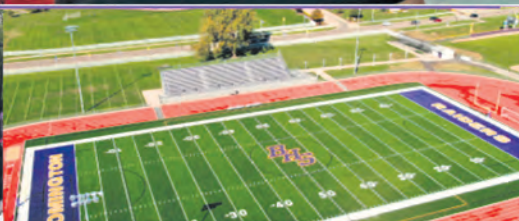
**SCHEDULE AN
APPOINTMENT ONLINE!**



**CHRISTIE
CLINIC**



CHRISTIECLINIC.COM



Educational Environment Promoting:

- Mutual Respect & Appreciation for the Diversity of students and staff
- The importance of Family & Community Engagement
- Supportive Learning Environment in which all students can succeed

**300 East Monroe
Bloomington, IL 61701**

Fax: 309-827-5717

Phone: 309-827-6031

www.District87.org



diversity

You belong in B-N

McLean County is passionate about being an inclusive community that celebrates diversity in ethnicity, race, age, gender, identity, sexual orientation, self identity and perspectives. Central Illinoisans are famous for helping their neighbors, supporting those in need and working together for an inclusive and safe environment for all.







diversity



GENERAL

Human Relations Commissions of Bloomington

The primary responsibility of the commissions is to eliminate unlawful discrimination within the Cities of Bloomington and Normal. The commissions also serve as catalysts to resolve conflicts within the community, through the use of mediation and conciliation.

Labyrinth Outreach Services To Women

A non-profit group that helps ex-offenders adjust to the community after jail or prison.

McLean County Museum of History

Exhibits and information about the diversity of cultures that shaped and have influenced McLean County.

ANTI-BULLYING

District 87

Bloomington schools' homepage, with Talking Tips for Parents and Teachers for School Violence (in English and Spanish).

Unit 5 Anti-Bullying

Resources for Normal students to report bullying, with cyberbullying a special focus.

AFRICAN-AMERICAN

100 Black Men of Central Illinois

Mentoring, scholarship guidance, and health and wellness resources particularly for young African-Americans.

Bloomington-Normal Black History Project

A collection of photographs, portraits, booklets, articles, and photocopies related to club organizations and churches of the local African-American community over the 19th and 20th centuries.

Bloomington-Normal NAACP

Resources, issues, and advocacy for the African-American community.

LATINO

Conexiones Latinas

Information about and education for McLean County's Latino community

INDIAN/ASIAN

McLean County India Association

Resources, outreach, and information for McLean County's Indian residents, students, and workers.

LGBTQ+

Illinois State University LGBT/ Queer Studies and Services Institute

Devoted to "equity and social justice" for the campus LGBT community.

Illinois Wesleyan University LGBTQ+ Student Life

A comprehensive clearinghouse of resources for the LGBT community.

Parents and Friends of Lesbians and Gays

Support for families of LGBT individuals.

Prairie Pride Coalition

Advocacy for Central Illinois' LGBT community.

FAITH AND FAIRNESS

Hindu Temple of Bloomington-Normal

Worship and resources for the Hindu community.

Islamic Center of Bloomington-Normal

Worship and resources for the Islamic community.

Moses Montefiore Temple

Worship and resources for the Jewish community.





BEER NUTS

“Good times, great nuts.” It’s a slogan that sums up this global business that started out in a small confectionary shop in Bloomington by Russell Shirk. Shirk originally sold peanuts by the scoop out of his Caramel Crisps Shops. The redskin peanuts were a top seller, and because peanuts and beer are a natural pairing, Shirk’s Glazed Peanuts were soon carried by bars across the land.

Now called Beer Nuts peanuts, this original offering is just one of many delicious snack items produced at the 10,000 square foot factory in Bloomington. Beer Nuts has

expanded beyond the simple peanut to include cashews, almonds, pecans and macadamia nuts, plus a variety of mixes including bar mix, party mix and cantina mix.

But Beer Nuts is more than a manufacturer

of a widely popular snack. It’s part of the fabric life here in McLean County.

“We grew up here, in this wonderful community who supported us for so many years and it turned into a special relationship where we are able to give back to the community in various ways”, says Andy Shirk, President of Beer Nuts.

And one of the most tangible ways is the Shirk Family Foundation. Established in 1994 by Russell and Betty Shirk, the Shirk Family Foundation is committed to honoring their founder’s vision by supporting charitable, arts related, educational, scientific and athletic organizations in McLean County that encourage excellence, leadership and spiritual growth.



HOW ARE YOU GOING TO TAKE CARE OF YOUR LOVED ONE?

EdwardsGroupLLC.com


Edwards Group
ELDER CARE ADVISORS
David O. Edwards, Attorney

**LONG-TERM ILLNESS
CAN CAUSE STRESS
FOR THE ENTIRE FAMILY**

AN ELDER CARE CONFERENCE

with an Edwards Group Elder Care Advisor is a great first step in decreasing stress and understanding how to get the care your loved one deserves.

Our advisors help ensure you’re making the best decisions possible.

**CALL TODAY ☎
309-388-3807**

Offices in Springfield
& Decatur!

Friendly, Trusted Commercial Lenders

Committed to the success of your business.



We're with you!



We understand your passion for business, appreciate your countless hours of hard work, and believe in partnership that makes a difference.



MARINE BANK
309.585.2006 • ibankmarine.com

Committed to YOUR
satisfaction.

We are one of the
largest, full-service,
independent insurance
agencies in
downstate Illinois.



That's why you can trust us to help
protect the things you value most.



2806 E Empire St, Bloomington
(309) 662-2100



*The place to go for
things that grow.*

2010 Fox Creek Rd, Bloomington, IL 61701
(309) 828-4580 | Email us at niepagen@gmail.com

Open 7 Days A Week!

Helping to Build an Inclusive Community in Bloomington-Normal

Special
Olympics
Illinois



Scan here to
make a donation
or visit soill.org
to learn more

Volunteer • Compete • Coach • Support





RIVIAN

THE ELECTRIC ADVANTAGE

Central Illinois is prepared for the future — and Rivian Automotive is just the start.

The 2021 Rivian R1T will be the first mass-market electric pickup truck. And it will pack a punch: The initial Launch Edition will wield 735

horsepower and can hit 60 mph in 3 seconds, with a range of 300 miles between charges. The base model will cost \$67,500.

Rivian has been all-in on Normal since investing \$16 million here in 2016, with the help of various

incentives. Since then, the company has been snapping up land around the plant, including 380 acres recently.

Every indication points to the region becoming a hub of electric vehicle production.

A report by the trade group Advanced Energy Economy estimates the number of electric transportation sector jobs in Illinois is poised to double by 2024, to about 9,500.

Having a highly trained workforce is clearly a crucial piece in the puzzle. Central Illinois produces hardworking, committed employees. A new Heartland Community College Electric Vehicle Energy Storage (EVES) training program will give students them the skills to accelerate in this fledgling sector of the economy.

The state is providing \$7.5 million and another \$1.5 million is coming from the private sector. A six-bay electric vehicle lab is expected to be in place by 2022.

That investment and commitment to growing a local, specialized workforce will make the region even more desirable to companies looking to grow. They'll come here.

And McLean County is ready.





CHILD CARE & LEARNING CENTERS

BLOOMINGTON-NORMAL

- Alphabet Soup Academy, Inc.
- Blooming Grove Academy
- Bloomington Day Care Center, Inc.
- Bright Horizons Childcare and Early Ed
- Cadence Academy
- Chesterbrook Academy
- Child Care Connection Learning Center
- Children's Home + Aid
- Club House Child Care Center
- Debra T. Thomas Learning Center
- Epiphany Catholic Preschool
- Heartland Head Start
- Katie's Kids
- Kindercare Learning Center
- La Petite Academy
- Little Jewels Learning Center
- Milestones Early Learning Center
- Montessori Children's Centre
- Noah's Ark Nursery School
- Rocking Horse Child Care Center
- Scott Early Learning Center
- Scribbles Center for Learning, Inc.
- Second Presbyterian Church Preschool
- Shining Star Learning Center
- YMCA
- YWCA Sarah Raymond Ece Center
- YWCA Young Wonders

WE OFFER COMPLIMENTARY EXAMS

SPECIALIZING IN BRACES AND INVISALIGN
FOR CHILDREN AND ADULTS


drake orthodontics
QUALITY CONVENIENCE SATISFACTION
www.bnbraces.com



On the Circle in Uptown Normal

children's
discovery
museum

ChildrensDiscoveryMuseum.net



Experience Award
Winning Museums in
Bloomington-Normal!



McLean County
MUSEUM of HISTORY

Mchistory.org

On the Museum Square in
Downtown Bloomington

BIAGGI'S RISTORANTE ITALIANO



PRIVATE EVENT ROOM
Host an Unforgettable Event at Biaggi's

3010 East Empire Street • Bloomington
(309) 661.8322 • www.BIAGGIS.com



meet
J PHILLIPS
*Commerce Bank,
Bloomington-Normal President*

We're all in this together. It's one of the guiding principle of Commerce Bank...and J Phillips.

Commerce Bank believes that their success is not defined not only by their ability to help people meet their financial challenges, but also by the mark they leave on the world. Therefore, they make continuous and ongoing engagements in ideas, programs and technology that serve their customers and strengthen the community.

The Commerce Bank branch in Bloomington-Normal is one of the top 40 busiest branches in Commerce corporately.

Commerce Bank has the ability and resources to invest in those who help move our community forward.

Commerce Bank is not only a community leader, but they also support the people, the organizations, and the thought process of growing our community. They also encourage their employees to be involved in the community through volunteerism.



meet
**CHERYL
MAGNUSON**

Majestic Interior Design, Owner

One might wonder when Cheryl Magnuson finds the time to get any work done. Because Magnuson is at every fundraiser, gala, ribbon cutting and community event. And she is usually recruited to be on (or chairing) the decorating committee. Which is understandable, considering she is the owner of Majestic Interior Design, Bloomington.

Magnuson started her interior design business in 2006, and what started as a one-woman office has organically grown to a team of six designers, an assistant designer and an office manager.

"This is such a great place to live, with so many wonderful, kind people who support our local businesses and non-profits. Life is fairly easy here; it's as much fun as you want to make it!"

Majestic is a full-scale interior design firm that offers a variety of services including commercial and residential renovations, design consultation, floor plan development, spatial planning, interior design and styling, and much more. Majestic is also responsible for some signature commercial spaces including the Central Illinois Regional Airport (CIRA) in Bloomington, the Evangelical Free Church kid's space and the DoubleTree by Hilton ballroom.

Success goes hand-in-hand with her community involvement. Magnuson serves on a variety of boards including the Board of Directors of the McLean County Chamber of Commerce, the Convention and Visitors Bureau board, Shakespeare Foundation and the Normal Public Library board.



RECREATION

NORMAL

AQUATICS

- Fairview Family and Anderson Aquatic Centers

PARKS

20 PARKS INCLUDING

- Anderson
- Fairview
- Fell
- Ironwood

- Martin Luther King, Jr.
- Maxwell

AMENITIES

- Baseball & Softball Fields
- Batting Cages
- Birding
- Cricket Pitch
- Cross County Courses
- Disc Golf Courses

- Dog Parks
- Football Field
- Horseshoe Pits
- Inline Hockey Rink
- Lacrosse Areas
- Natural Areas
- Pickleball and Tennis Courts
- Playgrounds
- Skate Park

BLOOMINGTON

- Soccer Fields
- Walking Paths

GOLF COURSE

- Ironwood Golf Course

PARKS

44 PARKS INCLUDING

- Miller Park

Clearly welcoming.



VisionPoint
EYE CENTER

1107 Airport Road
Bloomington IL 61704

Clearly you.

At VisionPoint Eye Center, you're the priority. Enjoy friendly, efficient visits and receive seamless, integrated care from the area's familiar leaders in eye health care. We're here to give you an unparalleled eye care experience.

The doctors will see you now.

Daniel D. Brownstone, MD
Catharine J. Crockett, MD
Scott M. Pinter, MD

John F. Couillard, OD
Jason A. Dunn, OD
Jeffrey A. Huettemann, OD

David K. Landess, OD
Tom L. Mahaffey, OD
Wilson M. Movic, OD

Eric R. Norell, OD
Michelle R. Willenbring, OD

309.662.7700
www.visionpointeye.com

- O'Neil Park
- White Oak Park
- Constitution Trail

GOLF COURSES

- Highland Park Golf Course
- Prairie Vista Golf Course
- The Den at Fox Creek Golf Course
- Bloomington Country Club
- Crestwicke Country Club
- Lakeside Country Club

- Photography
- Picnicking
- Swimming

PARKS

- Comlara Park
- Lake Bloomington
- Parklands Foundation Preserve
- Funks Grove,
- Kenneth L. Schroeder Wildlife Sanctuary

- Moraine View State Park
- SH West County Park
- Howard Virgin Timber Park



SCAN QR
CODE FOR
FULL LISTING



MCLEAN COUNTY

AMENITIES

- Biking & Hiking
- Boating
- Camping
- Equine Activities
- Fishing
- Hiking
- Hunting
- Recreation for

Individuals
with disabilities



TeVoert Auto Repair

Full Time Auto Repair
Complete Alternator and Starter Service
Phone (309) 829-6923
1607 S. Morris Ave. Bloomington, IL 61701

Services	We Make Hydraulic Hoses
Small Engines, LP Engines, & Welding Services Automotive & Truck Starters/Alternators (Foreign and Domestic) Batteries AC Delco • Motocraft • XXXXX Farm Starters/Alternators (all brands) Snow Plow Motors Western & Meyers	Motorcycle Starters Marine Starters/Alternators • Power Trim Motors Small Engine Starters for lawn mowers DC Motors From tall gate to wheelchair lift Golf Cart Drive Motors • Starter-Generators Antique Car & Tractor Rebuild your unit Battery Cables Custom Made We Make Hydraulic Hoses

Liliana Taimoorazi Top Real Estate Broker

- Relocation Specialist
- Designations CRS, GRI and ABR
- Full time Agent
- 20 Years of Experience
- Award Winner for Loyalty, Integrity
- Excellent Customer Service
- Languages: English, Italian and Persian

Please contact Lilliana for all your
Real Estate needs!



COLDWELL BANKER
REAL ESTATE GROUP

Liliana Taimoorazi

309.826.5559

www.lilianacoldwellhomes.com



The Myerling

A Retirement and Adult Care Community

**Where you will feel
right at home...**

Affordable living at \$2000/mo • For elderly or others
3 meals per day • Weekly laundry & housekeeping
Maintenance of building & grounds • SatelliteTV & all utilities
Month-to-month leasing • Beauty salon

309-212-0520
www.myerling.com

2218 E. Lincoln St., Bloomington





Restaurants Around Town

Explore the different restaurants & cuisines
Bloomington-Normal has to offer.



TENTAC apartments

BRICKYARD
APARTMENTS

ST. IVANS
AT FOX CREEK

IRONWOOD
GARDENS
APARTMENTS

BROOKRIDGE HEIGHTS
APARTMENTS

TentacApartments.com

Library cards are **FREE!**



Apply for a
Library card

The Library's **600** annual
programs are also **FREE!**



Bloomington Public Library

205 East Olive Street
309.828.6091
BloomingtonLibrary.org
f t i n s

Restaurants in B-N

Flavors of Bloomington-Normal

A

- A&P Tap
- Alexander's Steak House
- American Legion
- Ancho & Agave
- Anju Above
- Annie's Eats Carry-Out and Catering
- Applebee's
- Arby's

- Aroma Indian Restaurant
- Avanti's Italian Restaurant

B

- Bakery & Pickle
- Bandana's BBQ
- Bao Destination
- Baxters American Grille

- Biaggi's Ristorante Italiano
- Binge House Pizza
- Blaze Pizza
- BloNo Pizza Co.
- Bloom Bawarchi Indian Restaurant
- Bob Evans
- Brass Pig Smoke & Alehouse
- Brew-Ha's
- Brown Jug

- Buffalo Wild Wings
- Bumpers Pub
- Burger King

C

- Cadillac Jack's
- Carl's Ice Cream
- Checker's Drive In Restaurant
- Cheeks
- Chef's Kitchen
- Chenoa Family Restaurant
- Chi Family Express
- Chick-Fil-A
- Chili's
- Ching's Chinese

- Restuarant
- China Star
- Chipotle Mexican Grill
- Chuck E. Cheese
- Circle 2 Pub
- Coffee Hound
- Coffee House Deli
- Core Life Eatery
- Corona's Grill
- Country Pride Restuarant
- Country Squire
- Cracker Barrel
- Crawford's Corner Pub
- Crossroads Café
- Culver's



Bloom Bawrachi
Indian Restaurant

Growing With Your Community



CEFCU Not a bank. Better.®

We've been part of the McLean County Community for **more than 20 years...** providing business and personal financial services.

Find out what we can do for you! Come see us at a Member Center or learn more at [cefcu.com](https://www.cefcu.com).

Let us help you in every phase of your life.



Starting or growing a business



Buying a home



Moving across country



Providing for your family



Planning for retirement



Investing in your future

[cefcu.com](https://www.cefcu.com)





Rob Dobs Restaurant & Bar

D

- D.P. Dough
- Danvers Tap
- Denny's
- DESTIHL Brewery
- DESTIHL Restaurant & Brew Works
- Dixie Family Restaurant
- Domino's
- DQ Grill & Chill
- DR McKay's Bar and Grill
- Dunkin

E

- Egg House Cafe
- Einstein Bros. Bagels
- El Merendero LLC
- Elroy's
- Emma's Eatery
- Epiphany Farms Restaurant
- Eric's Bar & Grill

F

- Famous Dave's Bar-B-Que
- Fat Elberts
- Fiesta Ranchera
- Finish Line Bar & Grill
- Firehouse Pizza & Pub
- Firehouse Subs
- Fireside Pizza
- First Wok Chinese Restaurant
- Five Guys Burgers and Fries
- Flingers Pizza & Pub
- Fort Jesse Café

G

- Garden of Paradise
- Garden Restaurant
- Garlic Press
- Gene's Ice Cream Inc
- Gil's Country Inn
- Gill Street Sports Bar & Restaurant
- Giordano's
- Giovanni's Pizza El Paso
- Golden Dragon
- Gracie's Tacos & Wings
- Grady's Pizza

- Grand Café
- Great Wall Chinese Restaurant
- Green Gables
- Green Garden

H

- Hacienda Leon
- Hardee's
- Harmony Korean BBQ
- Herradura
- Hot Wok Express

I

- I-Hop
- Imperial Buffet

J

- Jack's Café
- Jack's Restaurant
- Jason's Deli
- Jersey Mike's Subs
- Jesse's Grille
- Jim's Steak House
- Jimmy John's
- Joe's Pub
- Joe's Station House Pizza
- Jonesy's
- JP's Wheel & Alehouse

K

- K's Café
- Kegler's Pub
- Keller's Iron Skillet & Catering
- Kelly's On 66
- Kemp's Upper Tap
- Keps Country Kitchen
- KFC
- Kicks Bar & Grill
- Kobe Japanese Steak House
- Kochi
- Koozis Pizza & Bar

L

- La Bamba Mexican Restaurant
- La Gondola Spaghetti House
- Lake Road Inn
- Las Margaritas Mexican Bar & Grill
- Legends Sports Bar and Grill

- Lexington Social
- Lil Beaver Brewery
- Lions Den Café
- Little Caesars Pizza
- Logan's Roadhouse
- Long Horn SmokeHouse
- Longbranch Again Inc
- Los Portrillos
- The Lucca Grill
- Lu Lu's Pizza
- Lunkers
- Lupita's Restuarant

M

- Maggie Mileys
- Maguire's Bar & Grill
- Main Street Grill
- Mandarin Garden House
- Marco's
- Matt's Tavern
- Mayuri Restaurant
- McAlister's Deli
- McDonald's
- Meatheads Burgers & Fries
- Medici
- Merna Bar & Grill
- Minier Tap
- Moe's Southwest Grill
- Monical's Pizza
- Mugsy's
- Mulligan's
- Mystic Kitchen & Tasting Room

N

- Nightshop
- Noodles & Co
- Nooners
- Now Serving Davis Brothers Pizza

O

- Old Town Tap
- Olive Garden
- Outback Steakhouse
- Ozark House

P

- Panda Express
- Panera Bread
- Papa G's
- Papa Murphy's

- Parkview Inn
- Pho Bowl
- Pizza Payaa
- Pizza Ranch
- Pizzeria Roma
- Poblano Burritos
- Pokeworks
- Pop Up Chicken Shop
- Popeye's Louisiana Chicken
- Portillo's
- Potbelly Sandwich Shop
- Prairie Fire Grill
- Pub II
- Puran Indian Restaurant

Q

- Qdoba Mexican Eats

R

- Ray's Steak and Lemonade
- Reality Bites
- Red Lobster
- Red Robin Gourmet Burgers
- Rob Dob's Restaurant & Bar
- Rosati's
- Rosie's Pub
- Rory's Tap & Bow Inc

S

- Sabor De Mexico
- Sandy's Place
- Schooner's
- Seoul Mama, Inc
- Shannon's Five Star
- Sichuan Chinese Restaurant
- Signature India
- Smoke House Restaurant
- SONIC Drive-In
- Sorrento's Pizza
- Stave Wine Bar
- Steak 'n Shake
- Subway
- Super Gyro's
- Super JJ Fish & Chicken

T

- Taco Bell
- Taco Johns
- Taqueria El Porton
- Taste of India
- Texas Roadhouse
- Thai House
- That Burger Joint
- The Hornets Nest
- The Original Pinsaria
- The Original Pancake House
- The Rock
- The Spot
- The Spotted Dog
- The Vault Bar & Grill
- Times Past Inn
- Tobin's Pizza
- Tony's Diner
- Tony's Tacos
- Turbo Grille
- Tweekers Bar & Grill

U

- Uncle Tom's Pancake House & Restaurant
- Uncle Vait's Pizza

V

- Veracruz

W

- Wahlburgers
- Wendy's
- Western Tap
- Windjammer Lounge
- Windy City Wiener's
- WingStop
- Wish Bone
- Woody's Family Restaurant

Y

- Yumz Asian Cuisine



SCAN
QR CODE
FOR
MORE

Due to the vibrancy of our local restaurant scene, this list is a fluid. We apologize for any errors or omissions.

TOP LAWYERS BLOOMINGTON AREA BASED UPON A SURVEY OF THEIR PEERS



These **LEADING LAWYERS** have been recommended by their peers to be among the **TOP LAWYERS** in Illinois.

Farrah L. Hagan	Brady Connolly & Masuda PC	Normal	309.862.4924	Workers' Compensation Defense
A. Clay Cox	Cox & Fulk LLC	Bloomington	309.828.7331	Bankrupt/WO: Comm; Close/Private Held; Emp Benefits; Tax: Business; Trust/Will/Est
Thomas J. Arkell	Dunn Law Firm LLP	Bloomington	309.828.6241	Employment: Employee; Employ: Mangmt; Immig: Employment; Immig: Indiv; School
Larry A. Apfelbaum	Kanoski Bresney	Bloomington	309.829.5700	Workers' Compensation
Todd A. Bresney	Kanoski Bresney	Bloomington	309.829.5700	Personal Injury: General
Charles N. Edmiston II	Kanoski Bresney	Bloomington	309.829.5700	Workers' Compensation
William J. Harrington	Kanoski Bresney	Bloomington	309.829.5700	Personal Injury: General
Kathy A. Olivero	Kanoski Bresney	Bloomington	309.829.5700	Workers' Compensation
John J. Waldman	Kanoski Bresney	Bloomington	309.829.5700	Workers' Compensation
Timothy W. Kelly	Kelly & Castagna LLC	Bloomington	309.820.0600	PI: General; PI: Professional Malpractice; PI Pltff: Product Liability; ADR: PI
Terence B. Kelly	Kraft Wood & Kelly LLC	Bloomington	309.829.7069	PI: General; PI: Professional Malpractice; Workers' Comp
Kathleen McDonald Kraft	Kraft Wood & Kelly LLC	Bloomington	309.829.7069	Adoption & Reproductive Technology; Family
Gina L. Wood	Kraft Wood & Kelly LLC	Bloomington	309.829.7069	Criminal Defense: Felonies & Misd; Family; Juvenile
Eitan Weltman	Law Office of Eitan Weltman	Bloomington	309.829.4422	Creditor's Rights/Commercial Collections ; Real Estate: Residential
Thomas M. Barger III	LivingstonBarger	Bloomington	309.828.5281	Close/Private Held; Real Estate: Commercial; Trust/Will/Estate
Peter W. Brandt	LivingstonBarger	Bloomington	309.828.5281	Commercial Litigation; Med-Mal Def; PI Defense: General
Kirk A. Holman	LivingstonBarger	Bloomington	309.828.5281	Personal Injury Defense: General
Thomas A. Jennings	LivingstonBarger	Bloomington	309.828.5281	Agriculture; Real Estate: Commercial; Trust/Will/Estate
Elizabeth B. Megli	LivingstonBarger	Bloomington	309.828.5281	Close/Private Held; Creditor's Right; Land Use/Zoning; Real Estate: Comm; Trust/Will/Est
Richard E. Stites	LivingstonBarger	Bloomington	309.828.5281	Comm Lit; Med-Mal Def; PI Defense: General; Products Liab Def; ADR: PI
William C. Wetzel	LivingstonBarger	Bloomington	309.828.5281	Land Use/Zoning; Public Utilities; Real Estate: Comm; RE: Residential; Tax: Business
David M. Moss	Moss & Moss PC	Clinton	217.935.8341	Workers' Compensation
Nathan B. Hinch	Mueller Reece & Hinch LLC	Bloomington	309.827.4055	Construction; Real Estate: Commercial; Real Estate: Residential
Jay D. Reece	Mueller Reece & Hinch LLC	Bloomington	309.827.4055	Close/Private Held; Land Use/Zoning; Real Estate: Comm; RE: Residential
Robert T. Varney	Robert T. Varney & Associates	Bloomington	309.827.4444	Insurance/Ins Cov/Reinsurance; PI Defense: General; Product Liab Def; Tox Tort Def

These **EMERGING LAWYERS** have been identified by their peers to be among the **TOP LAWYERS** in Illinois who are age 40 or younger OR who have been admitted to the practice of law for 10 or fewer years.

Neel Mookerjee	Brady Connolly & Masuda PC	Normal	309.862.4914	Workers' Compensation Defense
Patrick R. Cox	Cox & Fulk LLC	Bloomington	309.828.7331	Close/Private Held; RE: Residential; Tax: Business; Tax: Indiv; Trust/Will/Estate
A. Christopher Cox	Cox & Fulk LLC	Bloomington	309.828.7331	Close/Private Held; Commercial Litigation
J. Harrison Fulk	Cox & Fulk LLC	Bloomington	309.828.7331	Family
Illir Imeri	ImeriRogers LLP	Bloomington	309.533.6858	Workers' Compensation Defense
Gina Couri-Cyphers	Kanoski Bresney	Bloomington	309.829.5700	Personal Injury: General
Laura A. Castagna	Kelly & Castagna LLC	Bloomington	309.820.0600	Personal Injury: General
Jonathan J. Bobell	LivingstonBarger	Bloomington	309.828.5281	Med-Mal Defense; Personal Injury Defense: General
Rachel J. Brandt	LivingstonBarger	Bloomington	309.828.5281	Commercial Litigation

Leading LawyersSM
*Find a better lawyer, faster*SM

emerging lawyersSM
*on a fast track to the top*SM

A lawyer CANNOT buy the distinction of Leading or Emerging Lawyer. The distinction was earned by being among those lawyers most often recommended by their peers. For a full description of our research process, a complete list of all Leading or Emerging Lawyers, and to view profiles of the lawyers listed on this page, go to

www.LeadingLawyers.com

A Division of Law Bulletin Media – est. 1854



ILLINOIS SHAKESPEARE FESTIVAL

THE PLAY'S THE THING

The nationally-renowned Illinois Shakespeare Festival attracts over 10,000 patrons each season to the fabulous open-air Ewing Theatre on the grounds of the Ewing Cultural Center. The Illinois Shakespeare Festival features top-tier professional actors who bring quality productions of Shakespeare and other plays in the same genre to crowds who visit from all over the country.



World Class Telecommunications Services For Your Business



Dependable customer support you can trust.

We're building out a fiber optic network in your community that connects to our national backbone. Get the pricing and collaborative, local service your business deserves. Call on Stratus Networks, your single source telecommunications solution.

DATA

Ethernet
Dedicated Internet
MPLS/MultiLinQos

VOICE

SIP Trunking
Local/Long Distance
Conference Calling



www.stratusnetworks.com



GAMMA PHI CIRCUS

ATTRACTION

THE CIRCUS
IS IN TOWN

Illinois State University's Gamma Phi Circus is the oldest collegiate circus in the nation with a unique performance troupe who dazzle crowds with their acrobatics and gymnastics.



(309) 452-7999

114 W North Street, Normal

Mon-Sat 10:00am - 6:00pm | Sun 11:00 - 4:00

@uptowngiftsandaccessories

@uptowngifts



Discover Heartland.
Discover Your Future.

Spring registration
starts November 2.

 **HEARTLAND**
COMMUNITY COLLEGE

heartland.edu/discover

**Earn Up to
\$825 This Month!***
Donate today at CSL Plasma

Center conveniently located:
1503 E College Ave., Suite P
Normal, IL 61761
(309) 433-0902

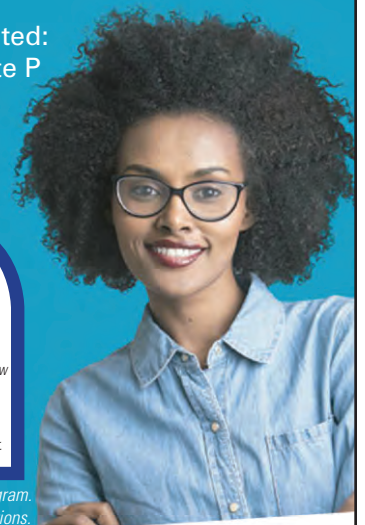
**NEW
DONOR
BONUS**

\$10



*Applicable for all eligible, qualified new donors. Bonus paid out as \$5 on first donation, and \$5 on second donation within a 30-day period. CSL Plasma employees are not eligible for this offer.

*Offer varies by location and by donation program. Offer may not be combined with other promotions.



CSL Plasma
Good for You. Great for Life.

XXXX

BN BREWERIES



DRINK UP!

Bloomington-Normal is no stranger to the craft beer boom. The breweries are as varied as the delicious elixirs they produce. Destihl, Normal, boasts a 47,000 sq. ft. building with 37,000 sq. ft. of production brewery space and is famous for the groundbreaking wild sour series. Lil Beaver Brewery, Bloomington, features 24 rotating beers on tap and cans to go. White Oak Brewing, Normal, features an amazing selection of small batch craft beer. And Keg Grove Brewing Company, Bloomington, is your local community centered brewery, dedicated to crafting beer

for everyone.

Local beer lovers will soon have even more to love with the addition of a 10-barrel microbrewery in

Bloomington called Casper Brewing Company. And Uptown Normal will be home to the Fiala Brothers Brewery and Beer Hall.





CASPER BREWING



FIALA BROTHERS

Carle.org

QUALITY

healthcare you can count on.

 **Carle**

BroMenn Medical Center



LISTEN UP LOCAL MUSIC VENUES

Bloomington-Normal has a vibrant music scene, featuring nationally known artists and up-and-coming local bands. It's easy to find a live show happening at one of the Twin Cities popular music venues, or bars and breweries and even local restaurants. And in the summer, the streets of Downtown and Uptown are filled with open-air music concerts and festivals.



BEST INDIAN RESTAURANT & SPORTS BAR

BLOOM BAWARCHI



503 N PROSPECT RD
STE 103 & 104
BLOOMINGTON IL 61704
PHONE: 3092773678
WWW.BLOOMBARCHI.COM



BCPA



The Castle Theatre



Jazz UpFront

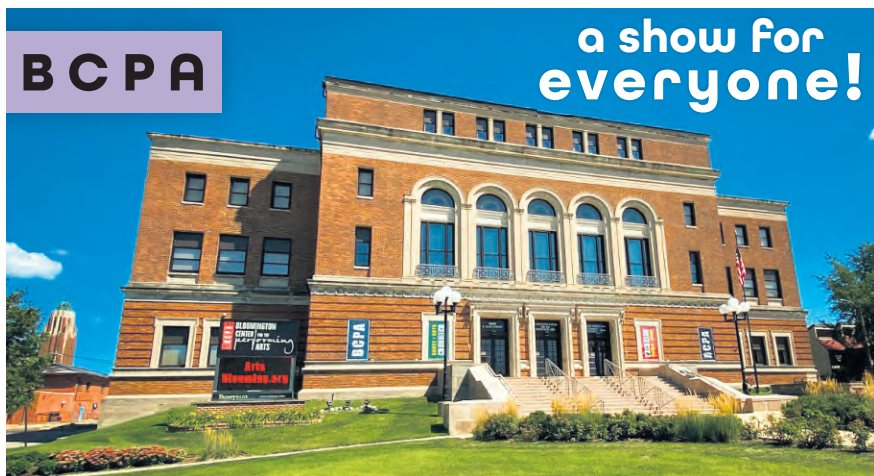


Music venues to check out

BCPA
Cadillac Jack's
The Castle Theatre
Corn Crib
CRAFTED Commons Place
Daddios
Dr. McKays
Drifters Pub
Gill Street Sports Bar & Restaurant
Grossinger Arena
Jazz UpFront
Legends Sports Bar & Grill
Loungeabout the Roundabout
Mackinaw Valley Winery
Maguire's Bar & Grill
The Mystic Kitchen & Tasting Room
Nightshop
Shooter's Lounge
The Stable Music Hall & Lounge
Rob Dob's Restaurant & Bar
VFW Post 454
Windjammer Lounge

BCPA

a show for everyone!



TOURING BROADWAY FAVORITES,
MUSIC, COMEDY, DANCE AND MORE!

BLOOMINGTON CENTER

FOR THE **PERFORMING ARTS**

600 North East Street

In Historic Downtown Bloomington, Illinois

**NEW SEASON
ON SALE NOW!**



ArtsBlooming.org



/ArtsBlooming



@ArtsBlooming #BCPA



@BCPA_Artsblooming



**Bloomington Center
for the Performing
Arts** (YouTube)



(309) 434-2777

Ticketmaster.com

BN ARTS PERFORMING

THE BARN III DINNER THEATRE AND EVENT CENTER

For more than 40 years, audiences have enjoyed dinner and a show at this unique venue that hosts comedy and musical performances.

COMMUNITY PLAYERS THEATRE

Community Players is a charitable, nonprofit theatrical organization that produces classic and contemporary dramas, comedies and musicals and is dedicated to enhancing the quality of life for our community through live theatre.

EWING THEATRE

This 430-seat open air theatre is home to the Illinois Shakespeare Festival

HEARTLAND THEATRE COMPANY

Heartland Theatre Company produces five professional quality plays each year, plus

hosts a popular 10-Minute Play Festival. The intimate 100-person venue attracts multi-talented artists and has a loyal following.

ILLINOIS SYMPHONY ORCHESTRA

The Illinois Symphony Orchestra is the premier regional orchestra in Illinois, inspiring audiences through live orchestral performances and programs. The ISO is a vital cultural resource and educational partner.

ISU CENTER FOR THE PERFORMING ARTS THEATRE & WESTHOFF THEATRE

Featuring a wide variety of performances, the Performing Arts Theatre feature an 800-seat concert hall and a 450-seat theatre. Westhoff Theatre is similar to Chicago storefront theatres with its 175-seat performance space.

IWU MCPHERSON THEATRE & WESTBROOK AUDITORIUM

McPherson Theatre is a 300-seat venue that hosts four main stage plays a year with a diverse playbill ranging from Shakespeare to musicals. Westbrook Auditorium hosts various performances by IWU music majors and other students. Several musical performances of all style periods are featured each semester.

MIDWEST INSTITUTE OF OPERA (MIO)

The Midwest Institute of Opera (MIO) has been in residence on the ISU campus since July 2011. The company provides professional performing opportunities for emerging opera artists, pianists and conductors to perform in a full opera production and, and makes this genre of music accessible to our community.

PRAIRIE FIRE THEATRE

Prairie Fire is a theatrical group dedicated to bringing professional, first-rate musical theatre and light opera to the community. Prairie Fire stages three to four events annually, all performed and directed by local talent, drawing from a pool of professional artists affiliated with Illinois Wesleyan University and Illinois State University. While the majority of Prairie Fire Theatre's performances are held on the IWU campus, they also perform in non-traditional community settings.



DANCE + CHEER + GYMNASTICS

- All About Dance
- BCAI Cultural Arts & Humanities
- BMI Bhaktivriksha Dance Class
- Jump Spot
- McLean County Dance Association
- Nrityamala Dance Academy
- Rising Stars Academy Gymnastics Etc.
- Stacy's Dance Factory
- Synergy Rhythm and Dance
- Technique Tumbling & Cheer Prep
- The Next Step Dance Studio
- Twin Cities School of Dance
- UpTown Dance
- USA Ballet
- Victory Academy



ARTS

LOCAL ARTISTS & EXHIBITS IN B-N



Bloomington-Normal offers an array of cultural assets including a community of artists, many nationally known. Some famous artists who have made or make their home in the Twin Cities include Harold Gregor, Ken Holder, Joel Meyer, Herb Eaton and Nick Africano.

Many Illinois State University fine art students decide to stay here after graduation, renting extremely affordable studios and enjoying the less hectic pace of working in New York or Los Angeles, but also have the proximity to Chicago and other major metropolitan art hubs.

THE BLOOMINGTON CREATIVITY CENTER

Plans are in place to renovate, modernize and equip the current Creativity Center. The center will focus on arts education, outreach and creativity while fostering inclusion and collaboration for underserved communities. Amenities will include music rooms, dance and recording studios, gallery space and a black box theater.

THE HANGAR ART CO.

The Hangar in downtown Bloomington is a unique place showcasing the work of local and regional artists, creators and collaborators.

ILLINOIS ART STATION

The Illinois Art Station provides children, youth and their families transformative learning through hands-on experiences in the visual arts.

ILLINOIS WESLEYAN UNIVERSITY MERWIN AND WAKELEY GALLERIES

Located in The Ames School of Art Illinois Wesleyan University, the galleries host eight exhibitions each academic year as well as a summer show.

MCLEAN COUNTY ARTS CENTER

The Arts Center hosts approximately twelve exhibitions yearly, including the annual Holiday Treasures exhibition and the annual Amateur Competition and Exhibition which showcases the best amateur artists from the region. MCAC also offers art classes, artist lectures and workshops. MCAC is integral to the success of the Sugar Creek Arts Festival in Uptown Normal.

SUGAR CREEK ARTS FESTIVAL

The Sugar Creek Arts Festival held in Uptown Normal is a juried show of fine art and fine craft featuring 130 exhibitors from across the nation in a variety of disciplines.

UNIVERSITY GALLERIES OF ILLINOIS STATE UNIVERSITY

University Galleries feature both emerging and more established artists with a permanent collection that includes work by Robert Rauschenberg, Andy Warhol, Deborah Muirhead and hundreds of others. The Galleries are located off campus in Uptown Normal by the Transportation Center and traffic roundabout/park.



BN ARTS





RELIABLE POOLS, INC.

GET IN THE POOL,
WE'LL DO THE REST



309-532-1687

401 East Lafayette St., Bloomington, IL 61701



The Deep End Tap is the perfect spot for a happy hour with colleagues, a before or after dinner drink with friends, or simply to unwind after a long day. The atmosphere and staff will make you feel right at home. Stay for one or Stay awhile!

- **Newly Renovated**
- **Monthly Drink Specials.**
- **Specialty Cocktails and Martinis**
- **Local Brews on Tap #drinklocal**
- **Locally Made Pizza #eatlocal**
- **Video Gaming Available**



The Bar is located inside Eastland Suites,
1801 Eastland Drive, Bloomington, **662-0000**

eastlandsuitesbloomington.com/the-deep-end-tap



McLean County Unit District No. 5

Educating each student to achieve personal excellence

Exceptional Educators, Outstanding Schools, High-Quality Facilities

- Exceptional Pre-K-12 programming
- Rigorous Academics for ALL Learners
- State recognition of student achievement
- Highly dedicated staff committed to excellence
- Emphasis on College and Career Readiness
- Advanced Placement & Dual Credit Opportunities
- 1:1 Device for EACH Student (Grades 6-12)
- Graduation rate of greater than 90 percent
- National & State recognized Fine Arts programs
- Accomplished programs & extra-curricular activities at all levels
- Outstanding community support
- Largest district in the area

-16 elementary schools -4 junior high schools -2 high schools
-3 early learning centers -1 vocational training center



1809 W. Hovey, Normal, IL 61761 • 309-557-4000 • unit5.org



CHILDREN'S DISCOVERY MUSEUM

ATTRACTION



INSPIRE THE LOVE OF LEARNING THROUGH THE POWER OF PLAY




The museum provides children the opportunity to discover a love of learning through the power of play.

"Science of play is very important, and it is very measurable. At the museum, children are constantly making memories and building that all-important foundation in a supportive and safe environment. Being in a safe environment is first and foremost," says Beth Whisman, executive director of the Children's Discovery Museum.

From driving a combine to conducting an orchestra to running a restaurant, the Children's Discovery Museum in Uptown Normal is three floors of fun.








ANCHO & AGAVE

tacos+amigos+tequila

3006 E. Empire Street • (309) 590.3200
ANCHOandAGAVE.com



THE COPY SHOP

309.827.5466
THECOPYSHOPONLINE.COM

- Business Printing
Luxury Business Cards / Stationery / Forms
- Creative Design Services
- Posters / Banners / Signage
- Offset / Large Format Printing
- Architectural Prints
- Mounting / Laminating
- Bindery Services
- Wedding / Event Printing
- and more!

**WE ARE
YOUR
LOCAL
PRINTER!**

302 E WASHINGTON STREET, BLOOMINGTON, IL



HISTORY COMES ALIVE

MCLEAN COUNTY MUSEUM OF HISTORY



The McLean County Museum of History is a nationally accredited, award-winning museum with five permanent exhibit galleries and three rotating galleries and home to the Cruisin' with Lincoln on 66 Visitors Center.



SERVING BUSINESSES FOR ALL OF THEIR REAL ESTATE NEEDS...

- Landlord representation for leasing
- Tenant rep and site selection
- Selling or buying
- Office, Retail, Industrial, Land, Hospitality, Multifamily and Investments



CONTACT MEGHAN TODAY!

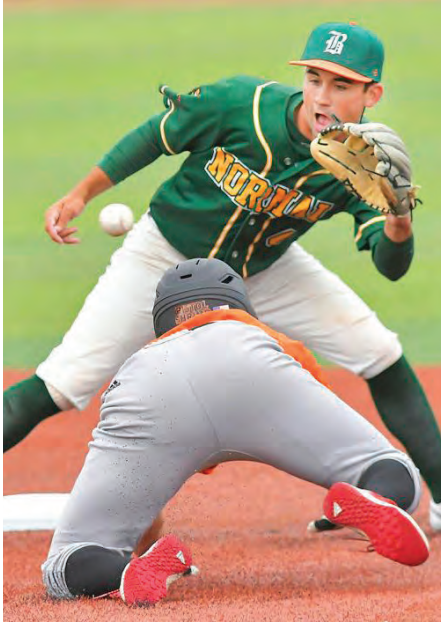


Meghan O'Neal-Rogozinski, CCIM
 Cell: 309-532-1808 • Office: 309-664-3617
meghan.oneal@cbcregroup.com



CORN CRIB STADIUM

IF YOU BUILD IT, THEY WILL COME



While primarily used for baseball for the Normal CornBelters and the Kernels Collegiate League, the Corn Crib also hosts concerts for a wide range of genres. Artists including Toby Keith and Snoop Dogg have played at this venue. Heartland Community College Hawks use the venue for their athletic events in the spring and fall semesters.



2028 Warehouse Rd., Normal
309-454-5885
www.jspencerconstruction.com



At Least
**\$30,000
Per Year**

McLean County
**Scholarship
Guarantee**

**No. 1 in Illinois
(7th in the nation)
for job placement***

*Zippia, 2021





CRAFTED



CRAFTED

COFFEE BREWS

#1 Best Coffee Shop, #1 Best Smoothie,
and #2 Best Specialty Drink!



It is a pleasure to fill your cup, Blo-No!



Pokeworks
FRESH HAWAIIAN KITCHEN

JUST BEYOND NORMAL | 1101 AIRPORT ROAD | BLOOMINGTON IL 61704

CRAFTEDCOMMONS.COM



HEALTH CARE



Birth Center of Bloomington-Normal

A birthing center is a safe, comfortable haven that provides healthy women holistic family-centered care with an emphasis on pregnancy, birth and breastfeeding support. The birth rooms have large tubs for labor or birth along with full-sized beds and private bathrooms. The entire staff, which includes highly educated and caring nurse 'midwives' that support mothers physically and emotionally on their journey to motherhood.



Bloomington-Normal is home to many nationally recognized health care facilities and providers. From heart health to cancer to eye centers to dental health, McLean County has an overall health score of 69, well above the US average of 48. Below are some of the many notable facilities in the area

CARLE BROMENN MEDICAL CENTER

Carle BroMenn Medical Center has served the people of Central Illinois for nearly 125 years. They offer top-notch care in neurology, cardiology, orthopedics, obstetrics, behavioral health services and more. They are also a teaching facility and offer residency programs in neurosurgery, neurology, family medicine and clinical pastoral education. Carle BroMenn was recently named one of the "Best Places to Work in Healthcare" by Modern Healthcare magazine and was given the American College of Cardiology's NCDR Chest Pain MI Registry Platinum Performance Achievement Award, one of only 212 which were awarded nationwide.

OSF ST. JOSEPH MEDICAL CENTER

OSF St. Joseph is designated a Magnet hospital and named a Top U.S. Hospital by The Leapfrog Group as one of only 41 hospitals across the nation, and one of only six in Illinois, to continuously earn an "A" rating for patient safety since Leapfrog began awarding letter grades in 2012.





CHRISTIE CLINIC

Christie Clinic is one of the largest physician-owned, multi-specialty group medical practices in Illinois. Established in 1929, Christie Clinic has a rich history of delivering quality and personalized healthcare to the East Central Illinois region. Driven by their mission “We Listen. We Care.,” providers and staff are known for having a truly personal touch with patients. Their culture is a unique blend of core values and a vision.

CARLE CANCER CENTER

With a comprehensive team of specialists, Carle specializes in the treatment of numerous types of cancer, including complex and advanced stage cases. The Center houses state-of-the-art equipment that allows the team to more accurately locate, stage and treat the disease.

FORT JESSE IMAGING CENTER/GALE KEERAN CENTER FOR WOMEN

Fort Jesse Imaging Center is a free-standing, multi-modality outpatient diagnostic imaging center that brings together advanced technology, skilled staff, convenience and comfort. They were named a 2021 Guardian of Excellence Award winner by Press Ganey, the national leader in healthcare consumer and workforce engagement. Ft. Jesse Imaging & Gale Keeran Center for Women was recognized as a top-performing healthcare organization achieving the 95th percentile or above for performance in patient experience.



The VEIN Specialists of Bloomington-Normal

The VEIN Specialists was the first vein clinic in the Twin Cities and is dedicated exclusively to state-of-the-art treatment of vein disease and helping people return to an active lifestyle. The doctors at the VEIN Specialists offer endovenous laser ablation, a non-surgical procedure for those who suffer from leg pain and discomfort caused by vein disease and for those who fear traditional vein surgery. Their mission is to provide each patient with comfortable, respectful care while delivering the best possible treatment.



COMMUNITY CONNECTORS



meet
**PARKER
MILLER**

*YMCA Personal Trainer
and Sports Nutritionist*

Parker Miller is one of the many Chicago transplants who came to the Bloomington-Normal area and stayed. And thrived.

Miller grew up in the Chicago area and moved here when his father got a job in town.

Miller graduated from Normal Community High School and then continued his education at Heartland Community College, graduating with an associate degree in Arts.

Miller attended Heartland Community College and completed his undergraduate degree at Illinois State University with a bachelor's in Small Business Entrepreneurship.

While at Heartland, Miller became interested in exercise science and nutrition education and became certified by the National Academy of Sports Medicine as personal trainer. His love for fitness and nutrition

continued at ISU and he is now considering a graduate degree in science.

Miller is now a certified personal trainer at YMCA and is excited that our community is embracing the idea of fitness activities and healthy eating habits.

Miller believes that Bloomington-Normal holds some of the most sought-after characteristics such as affordability, affluence and life qualities including exceptional health and fitness facilities; extensive dining and entertainment options; top-notch educational institutions combined with a welcoming and safe atmosphere.



**ORTHODONTIC
ASSOCIATES**

of CENTRAL ILLINOIS, PLLC

Schedule your complimentary
orthodontic consult with
Drs. Lauder, Peterson or Finlen by
calling (309) 662-5331

111 N. Regency Dr. Bloomington, IL 61701
www.orthodontic-associates.com

**WELCOME
TO OUR COMMUNITY**

We'd love to get to know you!
Join us at one of our three campuses:
Bloomington - Normal - Online

For service times and more information:



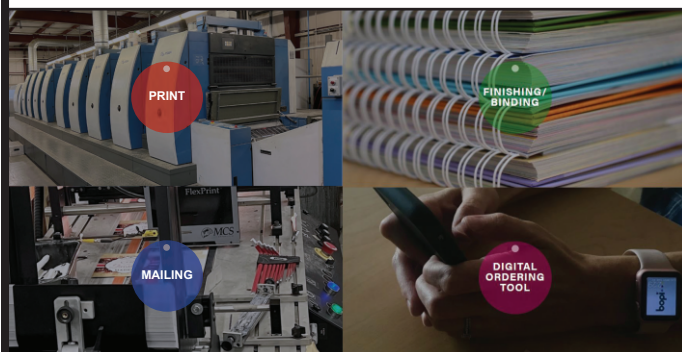
e **eastview**
christian church
ridiculous love



www.eastview.church

bopi[®] print+

your printing, mailing and fulfillment experts



Contact us at 309.662.3395
or visit www.bopi.com



1705 S Veterans Pky
Bloomington IL 61701



Bloomington-Normal is full of many options for people looking to get in shape. From full-service gyms with a suite of amenities to 24-hour facilities to those who offer specialty classes, **you are sure to find a fitness venue to suit your pocketbook and personality.**



FITNESS CENTERS NORMAL

ARC—Activity and Recreation Center
Crunch Fitness
InsideOut Fitness
ISU Student Fitness Center
Jazzercise Fitness Center
Technique Tumbling and Cheer Prep
The Workout Company

BLOOMINGTON

Altitude Trampoline Park
Anytime Fitness
Be Strong
Bloomington-Normal Athlete Factory
Crossfit Power and Grace
Esporta Fitness

Farrell's Extreme Bodyshaping
Fitness Connexion
Five Alarm CrossFit
Four Seasons Health Club
Game Time Gym II
Iron Coyote Challenge Park
Larry Strong Personal Training
MyLeanBody Boot Camp
Orangetheory Fitness
Planet Fitness
Rising Stars Academy of Gymnastics
The Factory of Bloomington-Normal
Training and Performance Center
YMCA

OUTSIDE B-N

Envy Fitness Center | Lexington
Fitness Center | McLean
Replex | Leroy

YOGA BLOOMINGTON

Body of Bloomington
Main Street Yoga Studio
Move Pilates and Yoga
Palms Together Yoga
The Yoga Studio
Yoga Lab

MARTIAL ARTS BLOOMINGTON

Akido of Bloomington-Normal
Band of Brothers Martial Arts and Fitness
Bloomington Combat Club
Bloomington Team 1 BJJ LLC
Bloomington-Normal Tai Chi
Coffrin's ATA Martial Arts
Dynamic Martial Arts of Bloomington-Normal Inc.
Element26

Frequency
Martial Arts
Fusion Martial Arts
Gracie Barra Bloomington
Infinity Martial Arts
Pagoda Rebirth Martial Arts & Fitness
Powerhouse Martial Arts Academy
Walker's Tae Kwon Do

NORMAL

Chang Kim Martial Arts Institute
Kim's Taekwondo Academy

OTHER

The Proving Grounds
Bouldering Gym
Upper Limits Rock Climbing

DON OWEN TIRE

620 W Olive Street
Bloomington, IL 61701

(309) 828-8473

1502 E Empire Street
Bloomington, IL 61701

(309) 662-7987

donowentire.com

MACKINAW VALLEY VINEYARD

**Wedding & Reception
Baby & Bridal Showers
Private Parties
Tour, & Tasting**

Saturday Night Concerts in the Vineyard
June til September - 7-11 PM

Three Annual Festivals
**Music, Wine & Craft Beer Festival
Art & Wine Festival
Grape Stomp Festival**

**Murder Mysteries Trivia Nights
Arts Classes
Salsa & More!!**

www.MackinawValleyVineyard.com 309-359-9463



Religious groups that are located in Bloomington-Normal

Affiliates with Islam
Christian faith
Baptist
Catholic
Church of Jesus Christ
Eastern faith

Episcopalian
Judaism
Lutheran
Methodist
Pentecostal
Presbyterian



Moses Montefiore Congregation

Bruccheem HaBeem!



The Moses Montefiore Congregation serves the Bloomington - Normal and McLean County Jewish community.

The place of worship features a beautiful

area with the holy books and scrolls. One of their scrolls, is known as a 'Sefer Torah' or book of Torah was handwritten by the Jewish people during the holocaust.

The Synagogue offers classes to those interested in learning about Judaism and finding a path to a better quality of life and spirituality.





Bloomington-Normal celebrates Diwali with annual food drive

BY KELSEY WATZNAUER, COURTESY OF THE PANTAGRAPH

Volunteers in Bloomington-Normal are honoring the Festival of Lights with a month long food drive to benefit local charities as part of their celebration of Diwali.

The local chapter of Sewa International collects food, infant supplies and monetary donations to be distributed as part of SewaDiwali's joint initiative of Dharmic organizations, temples and individual volunteers.

The tradition of a food drive has endured even through the pandemic because volunteers believe "everyone should have enough food to eat," said volunteer organizer Goverdhan Galpalli.

Volunteers have collected about \$3,000 to \$5,000 worth of food every year in Bloomington-Normal, Galpalli said.

The Hindu celebration of Diwali

signifies the triumph of good over evil and light over darkness. According to some stories, the celebration comes after King Rama won a battle against a demon and returned home to find the streets lined with lights and was welcomed with an outpouring of food and gifts.

The traditions and stories of Diwali change by region, but the central theme remains one of spreading the light of hope and peace through kindness and humanity.

The holiday also is associated with the Sanskrit word "sewa," which means selfless service.

Nationwide, SewaDiwali has collected 1,150 pounds of food this year in their efforts to fulfill their namesake of providing service.



**ILLINOIS STATE
UNIVERSITY**
Illinois' first public university



IllinoisState.edu



@IllinoisStateUniversity



@IllinoisStateU



@illinoisstateu



meet BRANDON THORNTON

Bloomington High School Teacher

Brandon Thornton's role as a speech and debate coach for the last seven years has afforded him the opportunity to see student voice and student agency in action.

Thornton says that these kids help him to stay young, well-rounded, and informed.

Thornton and his colleague Jen Brooks recently launched a program called the Project S.E.E. (Students Entering Education), aimed at guiding youth into the teaching field.

"I love the newness of it all, learning from others, and not always knowing what's best. It forces me to take chances, forces me to better understand and appreciate the work my colleagues in other departments are doing."

Ultimately, their hope is to address the underrepresentation of teachers of color. "I started out as a math teacher in 2011, co-teaching with brilliant special education teachers. Their expertise, connections with students, and unlimited patience inspired me to go back to ISU to become certified to move into special education," explained Thornton. "I am also currently working on my Ed.D. in special education."

When it comes to community involvement, Brandon launched an Alternative Breaks Program at Bloomington High School, with help from ISU's Center for Civic Engagement and the West Bloomington Revitalization Project. Still in the early stages, the goal is to help youth to rethink service and what it means to be an active, global citizen.



TOP
30%
FOR ILLINOIS
TEST SCORES

UNIT 5 SCHOOLS HIGH SCHOOLS

Normal Community High School
Normal Community West High School

JUNIOR HIGH SCHOOLS

Chiddix Junior High
Evans Junior High
Kingsley Junior High
Parkside Junior High

ELEMENTARY SCHOOLS

Benjamin Elementary
Brigham Elementary
Carlock Elementary
Cedar Ridge Elementary
Fairview Elementary
Fox Creek Elementary
Glenn Elementary

Grove Elementary
Colene Hoose Elementary
Hudson Elementary
Northpoint Elementary
Oakdale Elementary
Parkside Elementary
Pepper Ridge Elementary
Prairieland Elementary
Sugar Creek Elementary
Towanda Elementary

DISTRICT 3 SCHOOL HIGH SCHOOL

TriValley High School

#1
RANKING IN
BLM METRO
AREA

DISTRICT 87 SCHOOLS HIGH SCHOOL

Bloomington High School

JUNIOR HIGH SCHOOL

Bloomington Junior High

ELEMENTARY SCHOOLS

Bent Elementary
Irving Elementary
Oakland Elementary
Sheridan Elementary
Stevenson Elementary
Washington Elementary
Sarah Raymond School for Early Education

PRIVATE SCHOOLS HIGH SCHOOLS

Calvary Christian Academy
Central Catholic High School
Cornerstone Christian Academy

100%
GRADUATION
RATE

JUNIOR HIGH & ELEMENTARY SCHOOLS

Epiphany Grade School
Hammitt School
Holy Trinity Elementary
Holy Trinity Junior High
St. Mary's Catholic Elementary
Trinity Lutheran School
Mulberry Private School

ISU LAB SCHOOLS

University High School
Thomas Metcalf

VOCATIONAL SCHOOLS

Bloomington Area Vocational
Eugene Field Vocational Training Center
Tricoci University of Beauty Culture
Paul Mitchell The School Normal
Hair Masters Institute of Cosmetology
Reeder Transportation Training Center

TRADES AND MANUFACTURING PROGRAM

The Bloomington Area Career Center will offer a new program that grew out of a perceived need for more workers trained in trades and manufacturing.

BACC Director Tom Frazier said he wanted to develop the program after hearing from local businesses and unions that they were worried by a shortage of workers in their fields. He also heard concerns that many of the current workers are nearing retirement age.

The new trades and manufacturing program will give students a chance to get their OSHA 10 certification for workplace safety and visit and connect with area companies and unions.

The first part of the class, which would probably last four to six weeks, would cover the certification. Then the students would go to area organizations to learn more about how they operate, how to get into the industry, and some basic skills in the trade.

HEARTLAND COMMUNITY COLLEGE

The word “community” is at the heart of Heartland Community College’s mission. With a first-of-its-kind electric vehicle manufacturing training program in partnership with Rivian, to expanded programming to meet the needs of the ag industry to a near 100 percent job placement for health sciences graduates, Heartland Community College excels at helping students meet their goals.



ILLINOIS WESLEYAN UNIVERSITY



A private university founded in 1850, Illinois Wesleyan University boasts a 33% diverse student population in the class of 2022 and a 11:1 faculty to student ratio. Other points of pride for IWU is that they are ranked #7 in the nation (#1 in Illinois) for placing graduates in successful careers or grad school and the #1 small school with the highest earning graduates.

ILLINOIS STATE UNIVERSITY



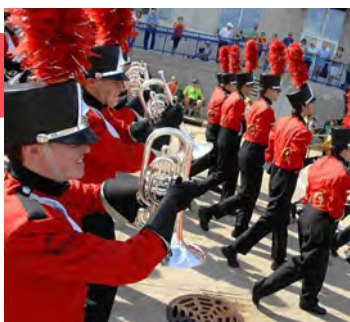
Illinois' oldest public university, ISU boasts a 73 percent graduation rate and 79 percent freshmen retention rate. With an enrollment of more than 20,000, ISU is ranked among the top 10 percent of College Factual's Best Colleges for the Money. ISU works as a diverse community of scholars who are committed to fostering a small college atmosphere with large university opportunities. The college is regarded as a first-choice top public university which has high retention and graduation rates with a diverse campus. They are known for record fundraising and a top-notch civically engaged campus.

ILLINOIS STATE IS THE **FIRST PUBLIC INSTITUTION IN ILLINOIS WITH A VARSITY ESPORTS TEAM.**



DID YOU KNOW?

- Adobe declared ISU a Creative Campus, making it the only university in Illinois to currently hold the title. This designation recognizes ISU's commitment to digital literacy and to teaching a creative and persuasive digital communication skills
- One in six teachers in the state graduated from Illinois State University. For over 150 years, this University has developed a reputation for preparing the highest quality teachers.



LINCOLN COLLEGE NORMAL

Lincoln College is one of the most affordable colleges in Illinois. With a liberal arts tradition, Lincoln College offers both two year and four year options with traditional and accelerated delivery modes.

BLOOMINGTON AREA CAREER CENTER

The Bloomington Area Career Center provides opportunities for students to explore careers and experiment with different skills before entering the workforce after graduation. The BACC serves students from 17 high schools and offers programs in automotive, nursing, cosmetology, criminal justice, EMT, culinary, construction and more.



MILLER PARK ZOO

EXHIBITS, PETTING ZOOS & MORE!

Zoos provide a wonderful, immersive way in which people can view animals that they normally would not have the opportunity to see.

Even though it is one of the smallest zoos in the country, Miller Park Zoo in Bloomington is the 13th oldest accredited zoo in America. The zoo offers a variety of exhibits and zookeeper interaction opportunities. Some highlights include a Sumatran tiger, greater flamingos, American alligator, river otters, red pandas, lemurs, Galapagos tortoise, bald eagles, Pallas' cats, snow leopards, gibbons, and red wolves. The zoo also features many large indoor and outdoor exhibits such as a Tropical Rainforest, ZooLab, Wallaby Walkabout, Children's Zoo and Animals of Asia. Miller Park Zoo is also highly engaged in adding even more animals to their exhibits, such as penguins, wallaroos and tree kangaroos to their Australian section; Orangutans, and Tapirs to their Asian exhibit; Andean Bear, Tayra and Giant Anteater to the South American exhibit, while also expanding their children's area. The Zoo recently added a brand-new monkey exhibit – the Debrazza monkeys.

"For the animals, being at a new exhibit at a zoo is like humans going to college – everything is new and different and it takes a little while to adjust but then everything is great," explains Jay Tetzloff, Miller Park Zoo Superintendent. "The first thing we think about is to make sure the environment is suitable for the animals, the staff and our guests."

Tetzloff is grateful for the enthusiastic support of the community which has allowed the Zoo grow and thrive. Residents and donors understand the important work the Zoo does in the areas of education and wildlife conservation.



Did you know that Merle Norman Cosmetics does more than just makeup?

They do manicures, pedicures, facials, body and facial waxing, spray tan, ear piercing, eyebrow and lash tinting and ear candling.

Bring this in for \$10 off a Merle Norman product or service.

(not good on previous purchases or in conjunction with any other offers. One per person.)

Call for an appointment 309-663-4733

Check out our website for a full list of services:

www.merleblm.com and like us on Facebook and Instagram for the most updated deals @merleblm



**MERLE
NORMAN**
cosmetics & day spa

120 Krispy Kreme Drive, Suite #1
Bloomington, IL 61704





BCPA

BLOOMINGTON CENTER FOR THE PERFORMING ARTS

The BCPA presents diverse programming featuring national and international touring artists and is the Bloomington home of the Illinois Symphony Orchestra.



Serving Children and Families Since 1902

The Baby Fold provides life-changing services to over 1200 individuals each year through 12 programs spanning 28 counties in Central Illinois. Find out how to get involved and help local kids at www.TheBabyFold.org.

Special Education Schooling
Early Childhood Initiatives
Foster Care
Adoption Support
Autism Services
And more

A cornerstone of the community for over a century!

108 E. Willow Street
Normal, IL 61761
www.TheBabyFold.org
(309) 451-7202



- Board Games - Card Games - Minis -



YOUR LOCAL FAMILY GAME STORE



With over 5,000 products in stock, it can be hard to pick what's right for you; good thing we can help with that!



In Historic Downtown Bloomington



- Pokemon - Puzzles - Warhammer - Shirts - Squishables -

- RPGs - Dice - Gundam - MTG - Events - D&D - Books - Toys -

COMMUNITY CONNECTORS



meet **TRACY PATKUNAS**

Realtor, Patkunas Homes,
RE/MAX Rising

It's a great time to buy or sell a home in the Twin Cities. Home buyers can find a wide range of homes in safe and distinctive neighborhoods from historic older homes with one-of-a-kind features to new builds with amenities that are custom-made. There is something in every price range and for every life stage.

Tracy Patkunas, a Bloomington-

*"I am very passionate
about my community and
feel there are so many good
reasons to move here."*

Normal native who has been a Realtor for the past 15 years, notes that homes in the \$200,000 range are the quickest to move off the market.

Patkunas also notes that while the Rivian influx of new employees keeps inventory on the low side, there is always a lot of market fluidity from first-time home owners upgrading to a bigger home or retirees downsizing to smaller homes.

Part of Patkunas's success as a Realtor is her enthusiasm for Bloomington-Normal. Explains Patkunas, "For those with school-age kids you can't go wrong with the options we have with Unit 5, District 87, the religious school systems, and the lab schools. Plus, we're home to some of the country's top notch education systems such as ISU, IWU, Heartland Community College and Lincoln College. We also have wonderful attractions and activities in the area including the BCPA, The Castle and so many festivals and events in Downtown Bloomington and Uptown Normal. I've always said if you can't find something to do in the area then you're just not looking."

BLOOMINGTON, IL
CARRIAGE CROSSING
SENIOR LIVING

ASSISTED LIVING & MEMORY CARE



CELEBRATE SPECIAL MOMENTS

At Carriage Crossing, you'll make new connections, create lasting friendships and live the life you love.

Our team makes celebrating our seniors' lives and socializing an everyday focus, building a close-knit community you'll be proud to call home.



SCHEDULE YOUR TOUR TODAY!

(309) 603-2500

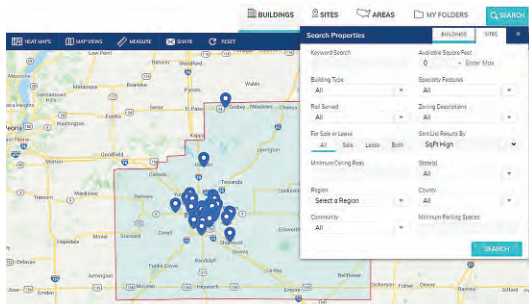
1402 Leslie Drive | Bloomington, IL 61704
carriagecrossingsl.com



**ECONOMIC
DEVELOPMENT
COUNCIL**

**WE MEAN
BUSINESS.**

The EDC helps businesses in McLean County grow and attracts new businesses to our community.



SITE SELECTION

The Bloomington-Normal workforce is young, well-educated, and able to meet the needs of a broad range of business and industry. We help businesses get started and get connected to resources. Let us help you turn your idea into reality. Visit the Site Search page on our website to view a list of commercial properties available.



INCENTIVE NEGOTIATIONS

We are the administrators of the local portion of the Illinois Enterprise Zone. The Enterprise Zone provides economic incentives to commercial companies undertaking new investments, including facility expansion, renovation, and other qualified improvements. Several incentives may be awarded to businesses in the zone boundaries. Visit our website for details.



ONE-VOICE D.C.

One Voice is a pro-community campaign to make McLean County a stronger economic force and a better place to live. Each spring, the One Voice Task Force travels to Washington D.C. to meet with our congressional delegation to show them our community stands united in support of community issues involving projects, initiatives and infrastructure improvements. For those projects needing funding, we work to meet with the federal agencies that may have grants or funds available.



BUSINESS RETENTION & EXPANSION

A healthy and vibrant local economy depends on the well-being of a community's existing firms. We want to help our businesses thrive in Bloomington-Normal. To learn more or schedule your business retention and expansion interview, contact us today.

**BN ECONOMIC
DEVELOPMENT COUNCIL**

309-452-8437 | www.bnbiz.org

200 W. College Avenue,
Suite 402, Normal, IL 61761





Residential
properties

Bloomington ranks No. 1 for first-time homebuyers

BY TIMOTHY EGGERT, COURTESY OF THE PANTAGRAPH

Bloomington ranks as the country's best market for first-time home buyers in 2021, according to a report released by realtor.com.

The online real estate tool said it analyzed 774 communities nationwide with at least 50,000 residents. It considered six factors, including home prices compared with local incomes, the number of homes for sale, job opportunities and amenities.

Bloomington ranked second in median listing price (\$160,000 in March), fourth in share of population aged 24 to 34 (14.3%), and fifth in active listings per 1,000 households (10.1) in March.

"We are extremely proud of this

designation which reaffirms something that we've known for years — that Bloomington is one of the premier places in the country to live, work, play, and raise a family," said former Bloomington Mayor Tari Renner.

Bloomington Mayor Mboka Mwilambwe credited the ranking to the city's "wide range of employment opportunities, our award-winning parks, top-notch schools, or the range of transportation options that can quickly get you anywhere in the country."

The city also hosts 5.8 food and drink establishments per 1,000 households, and an estimated time to work of 18 minutes, the report found.



commercial
properties



GREG YOUNT

COLDWELL BANKER
COMMERCIAL REAL ESTATE GROUP

Bloomington-Normal has great real estate investment opportunities, with an abundance of inventory that offers options to meet every need and price point.

“Our quality of life is such a draw that it makes Bloomington-Normal a desirable location for businesses, their owners and employees. And our **healthy local economy, supportive banks and helpful local chamber and economic development council** all help drive a thriving commercial property market.”

BN GIVE HOW WE

According to a 2020 study by SmartAsset, McLean County is the second most charitable downstate county in Illinois. The residents of McLean County are known for the generosity and rallying around a neighbor in need. Whether it's helping to raise funds for a new pediatric center, ringing bells for the Salvation Army or fostering a dog from Wish Bone Canine Rescue, the opportunities to volunteer and give back are plentiful. And the local charities and not-for-profits keep the giving fun with lots of unique galas, events and fundraisers.

Service organizations including Kiwanis, Jaycees and Rotary have several chapters in

town. These organizations give generously to many charities and causes and they also provide armies of volunteers for fundraisers and community initiatives.



SCAN
QR CODE
FOR SOCIAL
SERVICES
ORGANIZATION




SYNERGY
FLIGHT CENTER



2823 E Empire St | Bloomington, Illinois

(309) 828-4448

**BOOK YOUR
ADVENTURE
✈️ TODAY! ✈️**

- Private Airplane Charter and Management
- Cirrus Training Center
- Aircraft Sales
- Maintenance
- Avionics
- Aircraft Detailing



Central Illinois Regional Airport

Close. Convenient.
Your access to the World.

DELTA **FRONTIER AIRLINES** American Airlines **allegiant**

Central Illinois Regional Airport
—at Bloomington-Normal

Always free parking! | #ReadySetCIRA | www.CIRA.com

WE EXPECT PERFECTION, AND SO SHOULD YOU!

SPECS AROUND TOWN

PERSONAL SHOPPING BY APPOINTMENT

The only *independent luxury eyewear boutique* in central Illinois since 1998.

317 N. CENTER | #DOWNTOWNBLOOMINGTON
(309)82-SPECS | SPECSAROUNDTOWN.COM
tue. thru fri. 10:00 - 5pm | thur. til 6pm
saturday 10:00 - 2pm

MARCFIRST

Marcfirst provides a continuum of service and support for families, children and adults through their lifetime including residential, vocational development, employment, high school transition and therapeutic support of children. Marcfirst is also an advocate for adults with disabilities, helping them maintain their independence and stay in the community through their supportive living program. A new behavioral health clinic helps adults with disabilities who also suffer from a mental health disorder.

Marcfirst CEO Brian Wipperman has been in the community for more than four years, and has been at Marcfirst for two of those years. Wipperman and his wife have special education backgrounds, and a son with a disability.

“Marcfirst is one of the most unique organizations I have ever come across and I am blessed to work with the people there who are just incredible,” exclaimed Wipperman.

Marcfirst has already outgrown their newly opened Gregg Chadwick Marcfirst Pediatric Therapy Center, a state of the therapy space with a wide variety of individual and Group services. They are raising funds for their second therapy center. More space means Marcfirst is able to help more people.



GINGERBREAD HOUSE TOY STORE

Work is truly play at the Gingerbread House Toy Store, Bloomington. This family-owned and operated toy store has been in the community for 49 years. Owners Kate, Nikki and Beki Greene were raised as they were raised on toys from the original store, which they purchased in 2012.

The Gingerbread House carries high quality, educational toys with a mix of classic and cutting-edge trends, Frome Pokemon, to a huge LEGO collection to arts and crafts and cute plush toys, there is something for every child.

The Gingerbread House also plays a vital role in supporting the community through the Wink Alliance, the official giving arm of Gingerbread House Toy Store. Names after their friendly “shop dog” Wink, the Alliance selects one local non-profit every holiday season and rallies around them and their mission. This organization is added to the alliance as a friend and partner, and then they are supported by the sale of limited edition, co-branded collectibles!





get connected

Important Phone Numbers for Newcomers

Government

McLEAN COUNTY

Administration.....	309-888-5110
Assessor.....	309-888-5130
Auditor.....	309-888-5150
Building & Zoning.....	309-888-5160
Child Advocacy.....	309-888-5656
Circuit Clerk.....	309-888-5301
Circuit Court.....	309-434-6650
Coroner.....	309-888-5210
County Clerk.....	309-888-5190
Court Services.....	309-888-5360
Emergency Management Agency.....	309-888-5020
Facilities Management.....	309-888-5192
Highway Department.....	309-663-9445
Information & Technologies.....	309-888-5100
Jury Commission.....	309-888-5241
Nursing Home.....	309-888-5380
Parks & Recreation.....	309-434-6770
Recording Division.....	309-888-5170
State's Attorney.....	309-888-5400
Treasurer.....	309-888-5180
Veterans Assistance.....	309-888-5140

CITY OF BLOOMINGTON

Administration.....	309-434-2509
---------------------	--------------

TOWN OF NORMAL

Administration.....	309-454-2444
---------------------	--------------

RESCUE & LAW ENFORCEMENT

EMERGENCY.....911
(FIRE, POLICE, SHERIFF, AMBULANCE)

NON-EMERGENCY

McLean County Sheriff's Dept.....	309-888-5034
Bloomington Police Dept.....	309-820-8888
Normal Police Dept.....	309-454-9535
Normal Fire Dept.....	309-888-5030
Bloomington Fire Dept.....	309-434-2500

Utilities

ELECTRICITY

Ameren Illinois Utilities.....	800-755-5000
Corn Belt Energy Corporation.....	309-662-5330
Twin City Energy Services, Inc.....	309-661-3758
Illinois Power.....	309-663-0983
Power Illinois.....	309-829-3566

GAS

Twin City Energy Services Inc.....	800-755-5000
Nicor Gas.....	309-557-8507

TELECOMMUNICATIONS

Consolidated Communications Inc.	866-989-2255
Frontier Communications.....	309-827-1202
Gridley Telephone Company.....	309-747-2221

WATER & SEWER

City of Bloomington Water Dept.....	309-434-2495
Town of Normal Water Dept.....	309-454-9563

TRASH

City of Bloomington Public Works.....	309-434-2509
Town of Normal Public Works.....	309-454-9571

Community Services

BLOOMINGTON-NORMAL CONVENTION & VISITORS BUREAU

3201 Cira Drive #201	
Bloomington.....	309-665-0033
VistBN.org	

BLOOMINGTON PUBLIC LIBRARY

205 E. Olive Street	
Bloomington.....	309-828-6091
BloomingtonLibrary.org	

BLOOMINGTON SECRETARY OF STATE FACILITY (DMV)

1510 W. Market Street	
Bloomington.....	309-827-3531

ECONOMIC DEVELOPMENT COUNCIL

200 W. College Avenue, Suite 402	
Normal.....	309-452-8437
BNBiz.org	

McLEAN COUNTY CHAMBER OF COMMERCE

2203 E. Empire Street, Suite B	
Bloomington.....	309-829-6344
McLeanCoChamber.org	

NORMAL PUBLIC LIBRARY

206 W. College Avenue	
-----------------------	--

Normal.....	309-452-1757
NormalPL.org	

SOCIAL SECURITY

207 N. Williamsburg Drive	
Bloomington.....	877-405-4640

Getting your car tags and Driver's License

1510 W Market St, Bloomington
(309) 827-3531 • www.ilsos.gov/home.html

WHAT YOU NEED TO BRING WHILE OBTAINING YOUR VEHICLE TAGS

- Proof of identification such as a driver's license, passport, original birth certificate, military identification card. Or take two of the following: a work check stub with your full name, social security card, health insurance card, or IRS tax forms.
- The vehicles out-of-state title of if there is a lien, the name and mailing address of the lien holder.
Current out-of-state vehicle registration
- Have payment ready for the initial fee to register your vehicle and secure your car tag, plus an additional fee if there is a lien on your vehicle.

WHAT YOU NEED TO BRING WHILE OBTAINING YOUR DRIVER'S LICENSE

- Current state driver's license
Proof of name change, if different, such as marriage certificate or divorce decree
- Social security card or sworn affidavit if no Social Security number has been issued
- Two (2) proofs of Illinois residency with your name and physical address such as electric, gas, cable or utility bill, mailed blank statement, rent or mortgage documents, motor vehicle registration, or current homeowner's, life, or health insurance policy

ILLINOIS SYMPHONY ORCHESTRA
KEN LAM, MUSIC DIRECTOR
2021-2022 Season at a Glance

Resounding & Romantic
Illinois Symphony Orchestra
Sunday, November 7, 2021, 3:00 PM
Bloomington Center for the Performing Arts

Brilliant Brass
Illinois Symphony Chamber Orchestra
Saturday, December 4, 2021, 7:30 PM
Second Presbyterian Church

Holiday Pops in the Heartland
Illinois Symphony Orchestra
Friday, December 17, 2021, 7:30 PM
Bloomington Center for the Performing Arts

Incredibly Italian
Illinois Symphony Orchestra
Friday, January 28, 2022, 7:30 PM
Bloomington Center for the Performing Arts

Flora & Fauna
Illinois Symphony Chamber Orchestra
Saturday, February 19, 2022, 7:30 PM
Second Presbyterian Church

The Best of Queen & Journey
Illinois Symphony Orchestra
Friday, April 22, 2022, 7:30 PM
Bloomington Center for the Performing Arts

American Journey
Illinois Symphony Orchestra
Friday, May 13, 2022, 7:30 PM
Bloomington Center for the Performing Arts



ILLSYMPHONY.ORG 317-206-6160

Tracy Patkunas
309-275-5956
www.patkunashomes.com



Patkunas Homes
RE/MAX
RISING

the Y [®]
YMCA

FOR YOUTH DEVELOPMENT[®]
FOR HEALTHY LIVING
FOR SOCIAL RESPONSIBILITY

**WE'RE MORE THAN A GYM
WE'RE A CAUSE**

Programs for Health • Community Support • Youth Enrichment



We're working together for a healthier community.

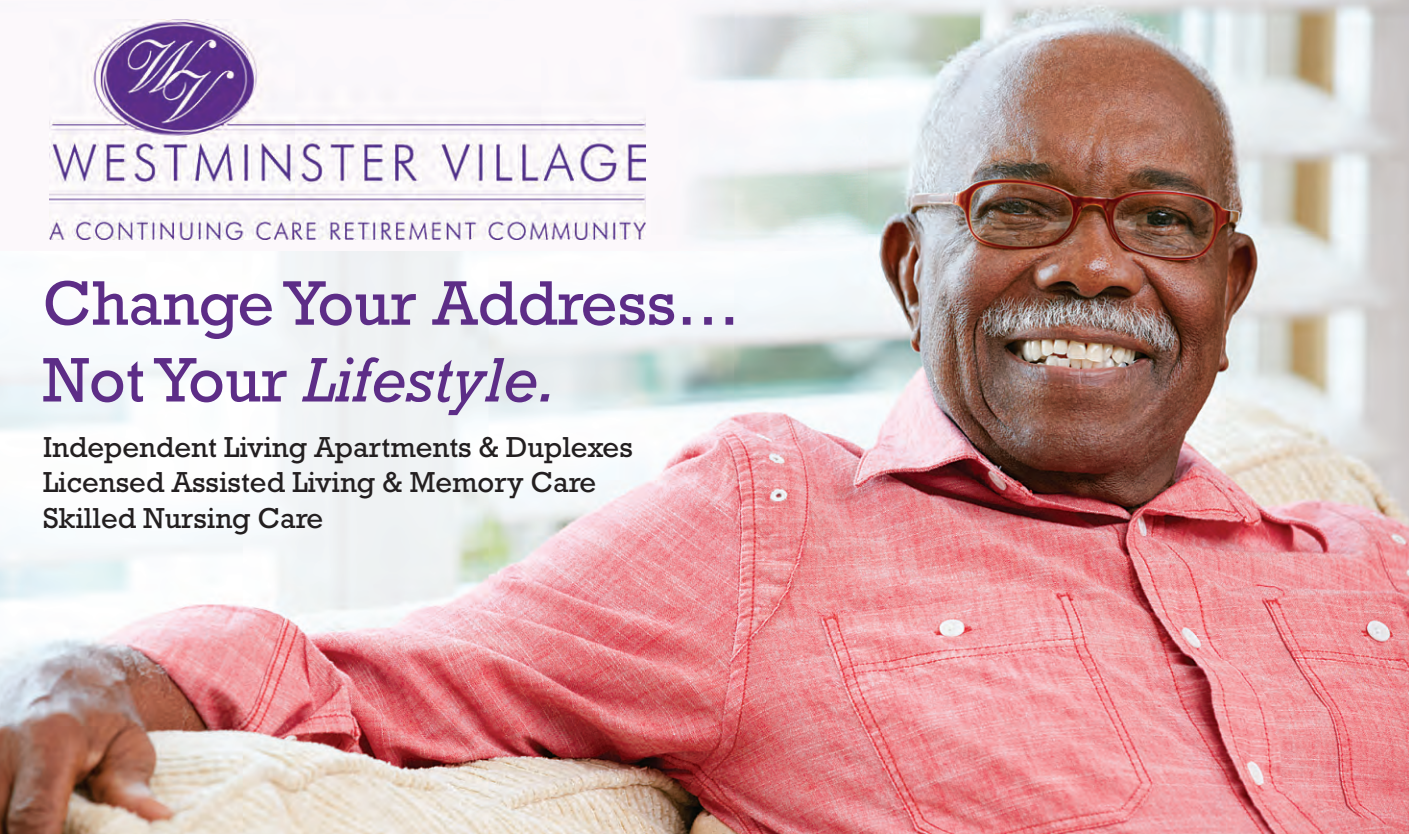
Join today!

Bloomington-Normal YMCA
309.827.6233 | www.bnymca.org


WESTMINSTER VILLAGE
A CONTINUING CARE RETIREMENT COMMUNITY

**Change Your Address...
Not Your *Lifestyle*.**

Independent Living Apartments & Duplexes
Licensed Assisted Living & Memory Care
Skilled Nursing Care



(309) 663-6474 • 2025 E. Lincoln St., Bloomington, IL • westminstervillageinc.com





Insurance Made for You.

We are insurance for families whose budgets are tight, but still get fevers in the middle of the night. We are Medicare for those who want more, with low-cost options and perks to explore. And we are coverage for employers that grow at every speed, offering flexible plans that evolve with their needs.

We are made for Illinois—headquartered here too. We are Health Alliance™, and **we are made for you.**

HealthAlliance.org

Individual and Family | Medicare | Employer Group





OSF ST. JOSEPH

Serving with the greatest care and love since 1880

OSF HealthCare St. Joseph Medical Center has faithfully served the people of the Bloomington-Normal area since 1880.

About 800 Mission Partners staff the 149-bed hospital, which is a Level II Trauma Center. It was named one of Newsweek's "World's Best Hospitals" in 2020 and has also earned the Magnet designation for nursing excellence.

In addition to the hospital, OSF HealthCare offers an extensive, local network of primary care and specialty physicians, including direct access to OSF HealthCare Children's Hospital of Illinois. We also provide urgent care through OSF OnCall and OSF PromptCare, as well as 24/7 virtual care through OSF OnCall.

Key Services

- OSF Cancer Center with radiation therapy and PET CT
- Family Birthing Center with 24/7 neonatology
- Neurosurgery
- Cardiovascular surgery
- Orthopedic surgery
- General and breast surgery
- Center for Healthy Lifestyles
- Weight management
- Cardiac rehabilitation
- Physical therapy, occupational therapy and speech language pathology

Learn more at osfstjoseph.org

